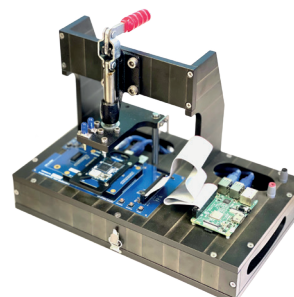


Option A — Stream1955 Evaluation Board

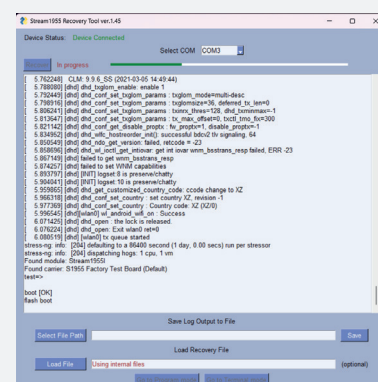
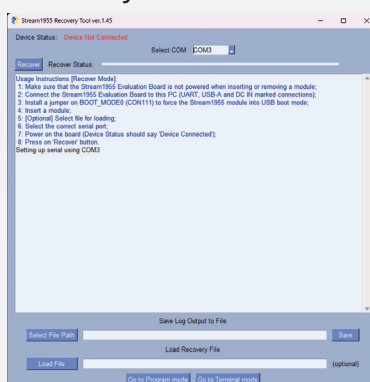
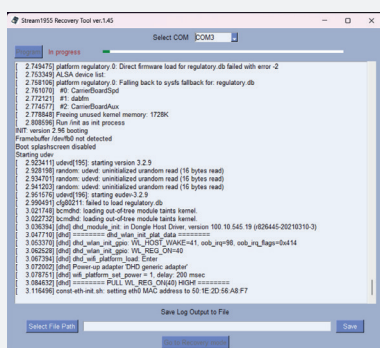
- ▶ De-bricking and programming Stream1955 during development and in production
- ▶ PC control (Windows tool available)
- ▶ Mounted to Board-to-Board connector
- ▶ 30 guaranteed mate/un-mate cycles (realistic >300 cycles if force applied evenly)



Option B — Stream1955 Factory Test Board with Mechanical Fixture

- ▶ Self-contained setup with button operation or command interface (virtual COM port)
- ▶ Easy SD card-based software image updates
- ▶ De-bricking, programming, and incoming quality inspection of Stream1955
- ▶ Mechanical fixture included for production use
- ▶ Industrial-grade Board-to-Board connector rated for 3,000 cycles

StreamUnlimited Windows Programming & Recovery Tool



StreamUnlimited, founded in 2005, is a supplier of software solutions and hardware modules for connected audio and IoT products, with over 120 employees at office locations in Vienna, Bratislava, Shenzhen, Osaka and San Francisco. As the de facto global system integrator offering its own IP and engineering services, StreamUnlimited development partnerships include all major semiconductor companies and technology providers in the consumer electronics and IoT channel. StreamUnlimited works with a global cross-section of high-end audio, CEDIA-channel, premium and mainstream consumer electronics and smart home manufacturers.



StreamUnlimited Engineering GmbH
Gutheil-Schoder-Gasse 10, 1100 Vienna, Austria
E-mail: sales@streamunlimited.com
Website: www.StreamUnlimited.com

Copyright StreamUnlimited. All rights reserved. Reproduction in whole or in part is prohibited without the prior consent of the copyright owner. The information presented in this document does not form part of any quotation or contract, and is believed to be accurate but may be changed without notice. No liability will be accepted by the publisher for any consequence of its use. All trademarks included herein are the property of their respective owners.